

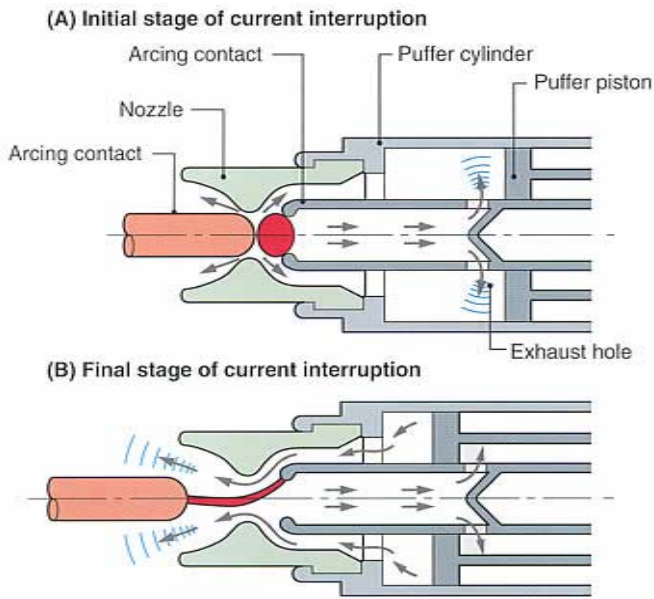
72.5~145kV Gas Insulated Switchgear



	Ratings
Type	G3A
Rated voltage	72.5/145kV
Rated lightning impulse withstand voltage	325/650kV
Rated power frequency withstand voltage	140/275kV
Rated frequency	50/60Hz
Rated current	1250/2000/2500/3150 A
Rated short time withstand current	31.5/40kA-3sec.
Rated gas pressure (abs.)	0.7 MPa(GCB)/0.7 MPa(GIS)
Applied standards	IEC

Gas Circuit Breaker

Principle of advanced hybrid puffer



Design philosophy for interrupting chamber

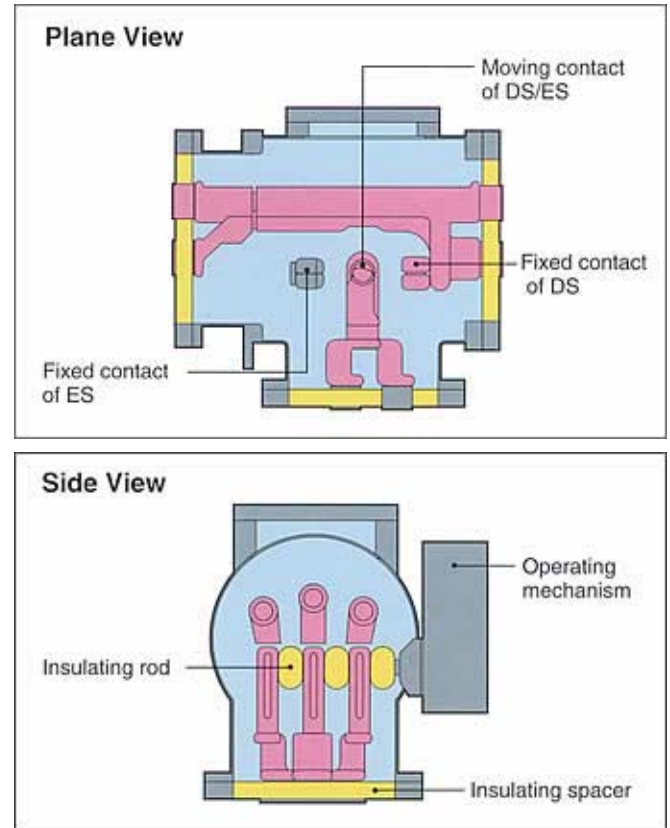
Effective are energy transfer to pressure rise

Optimum puffer cylinder dimensions

Reduce the driving energy

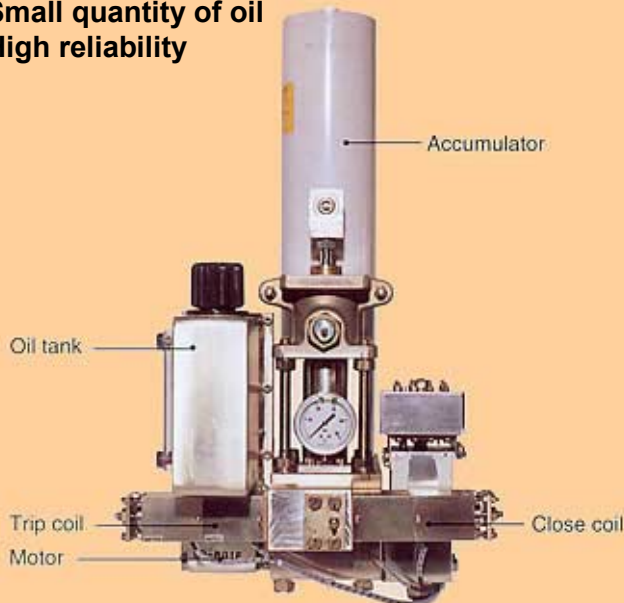
Feature of 3 Position Type for Busbar DS/M-ES

Reduced number of parts
Only one driving mechanism
Compactness
Physically mechanical interlock system

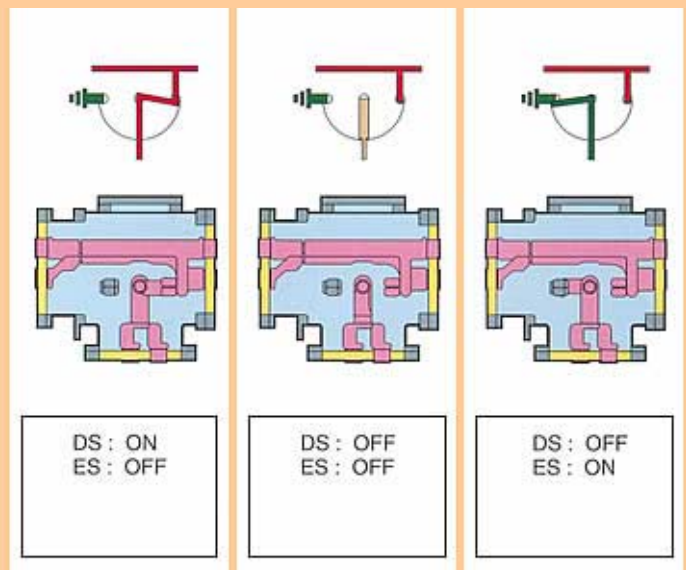


Hydraulic Operating Mechanism of GCB

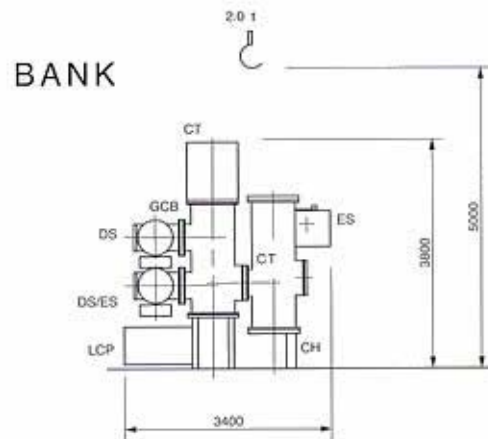
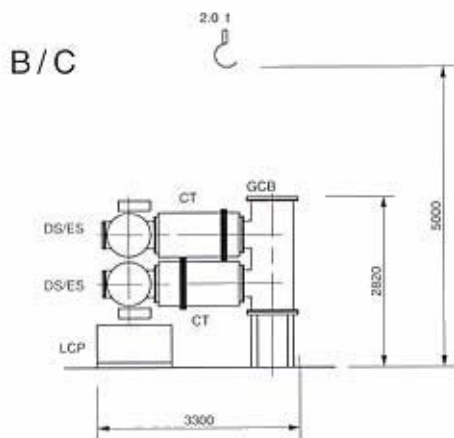
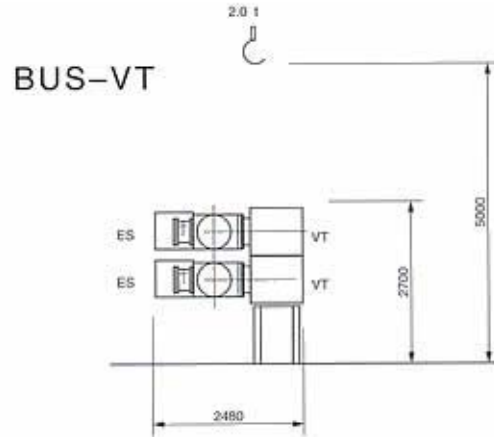
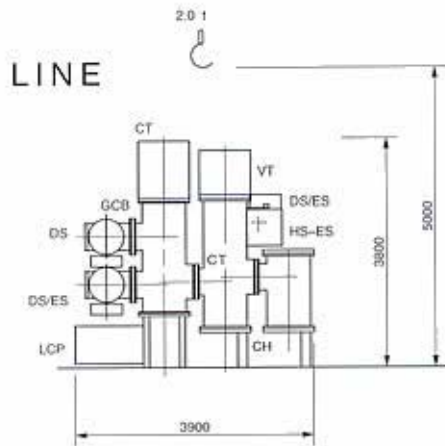
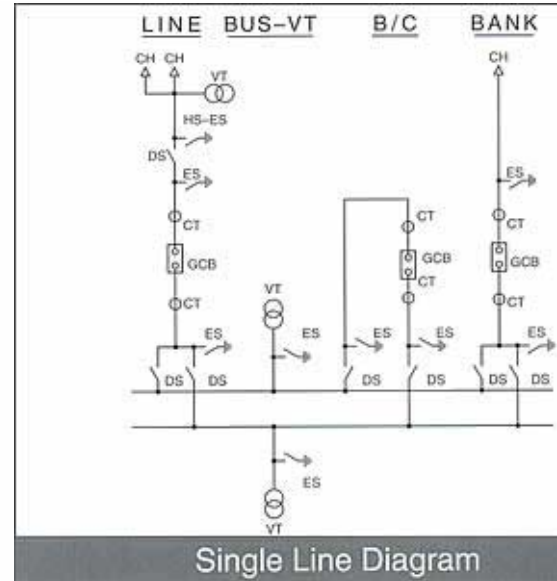
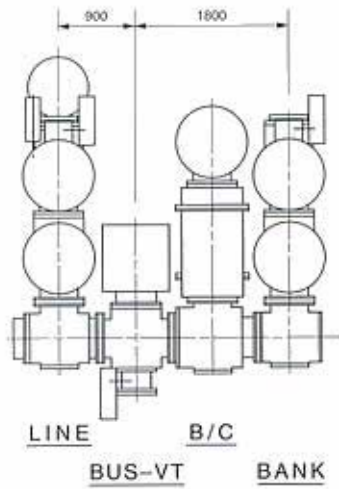
Piping-less
Reduction of sealing points and parts
Small quantity of oil
High reliability



Operating Mechanism of 3 Position Type DS/M-ES



Typical Arrangement (Double Busbar System)



Double Busbar System

TOSHIBA

TOSHIBA CORPORATION

POWER SYSTEM & SERVICES COMPANY

1, Shibaura 1-chome, Minato-ku, Tokyo 105-8001, Japan
Tel. 03-3457-3770 Fax. 03-5444-9184

The data given in this catalog are subject to change without notice.

5410-1 '01-03T1